

**TELL**  
TELL YOUR STORY



## GPS-BASED VEHICLE TRACKING SYSTEM

Whether our system is used in private, freight transport or other fields, you will surely find the functions which are most useful for you.

**DIVERSIFIED  
FIELDS OF  
APPLICATION**



**INTEGRATED  
FLEET TRACKING  
SOLUTIONS**



**TELL**  
TELL YOUR STORY



SEPT

### TELL Group Expansion (Hungary)

*Foundation of T.E.L.L. Rendszershizletatások Kft.*

OCT

### Mobile Application

*easyTRACK available for Android*

### GPRS-Based Remote Monitoring System

### Introduction of easyTRACK

*Development and market release of a GPS-based fleet management system*

### TELL Group Expansion (Romania)

*ATE.L.L. Security Systems S.R.L.*

2000

2006

2007

2009

2011

2012

2013

### The Very First TELL Product: a GSM Communicator

*Release of our first GSM-based product*

### Start of Own Production (Debrecen, TELL Headquarters)

*Launch of SMD-based own production*

### Market Release of GPRS easyAID

*Emergency call system*

### Magyar Posta (Hungarian Post Office)

*Project Development of a remote monitoring system with 2,800 end-point devices*



**+ easyAID**  
*Emergency call device*





**Website  
of the Year  
Award**

[www.easytrack.hu](http://www.easytrack.hu)



**JULY**

**E-Toll Declaration**

*T.E.L.L.  
Rendszershizletgazdálkodók  
Kft. joins the E-Toll  
System as a Toll  
Declaration Operator  
and provides full-scale  
services for e-toll based  
declaration*

2014



**GPS-Based Taxi Booking  
System**  
(Dubai, United Arab  
Emirates)

**DEC**

**Prima Primissima Award**  
(Hajdú-Bihar County, Hungary)  
*Entrepreneur of the Year Award*

**OKT**

**TELL Group Expansion**  
(Hungary)  
*Foundation of T.E.L.L.  
Biztonságtechnikai Rendszerek Kft.*

**JULY**

**OKF Project**  
(Hungary)

*Development of a countrywide fire  
report reception system for the National  
Directorate General for Disaster  
Management, Ministry of the Interior*

2016

2015

**Development of GSM  
Automation Products**

2017

**Release of New Product  
Features**

*Integration of IP-based cameras,  
introduction of smartphone platforms*

**SEPT**

**Mobile Application  
Upgrades**

**JULY**

**Introduction of  
3G-Based Technology**

**TELL Group Expansion**  
(Hungary)

*Foundation of T.E.L.L. Műszaki  
Fejlesztő Kft., opening of our office in  
Budapest*

2018

2019

**OCT**

**Voice Control  
in Mobile  
Applications**

**SEPT**

**Device-Side  
Integration of  
IP Camera  
Support**

**JULY**

**Introduction  
of Wi-Fi Support**

**FEBR**

**Release of  
4G Products**



As a major player in both domestic and foreign safety markets, TELL Group offers innovative products and services in the fields of remote monitoring, control and logistics.

Currently our company is present in four Hungarian and one Romanian locations with nearly 100 colleagues.

TELL products are sold now in more than 30 countries, covering both the private and the business sectors. Our product range includes all the elements necessary for providing remote monitoring services, from end-point devices to receiving software. Beyond that, our company provides comprehensive solutions for challenges appearing in the fields of gate control and vehicle tracking.

We truly believe that the implementation of our partners' individual needs, flexible technical support and a continuous development of our products are a key to long-term cooperation.



## 01

GSM  
COMMUNICATORS

Compact GSM II	8
ecoLINE GSM II	8

## 02

2G/3G/4G/IP  
COMMUNICATORS

Adapter2	9
Adapter2 PRO	9
DUALCOM SIA IP	10
DUALCOM SIA IP KIT	10
ecoLINE SIA IP	11
IP Bridge	12
IP Bridge PRO	12
Pager4	13
Pager4 PRO	13
Pager7	14
Pager8	14

## 03

GATE  
AUTOMATION

Gate Control 20	15
Gate Control PRO 20	15
Gate Control BASE 1000	16
Gate Control PRO 1000	16

## 04

IP-BASED  
REMOTE MONITORING  
RECEIVERS

TELLMon	17
Quectel UC20 Mini PCIe 3G Modem	17
Quectel EC25 Mini PCIe 4G Modem	17

## 05

ALARM  
MONITORING SOFTWARE

TMS Light	18
TMS Pro	18
AlarmTrack	18
IP Camera Detector	18

## 06

PERSONAL  
MONITORING SYSTEM

easyAID Monitoring	20
easyAID GSM	20
easyAID IQRF	
Emergency Button	21
easyAID Mobile	21

## 07

GPS-BASED  
VEHICLE TRACKING SYSTEM

easyTRACK II BASE	22
easyTRACK II FULL	23
CAN Adapter	23
Diesel Sensor	24
easyFCL	24
easyRFID	25
easyTEMP	25
easyRPM Monitor II	25

## 08

## POWER SUPPLIES

TT25VA-12V5	26
TT40VA-12V5	26
TT40VAC-16VAC/24VDC	26

## 09

## ACCESSORIES

GSM 2J-300 Antenna	27
Metal Case + Power Supply	27
DUALCOM EXT24-D	28
e-Shift Level Interface	28
e-Shift-D Cable	28
e-Shift-PAR Cable	29
e-Shift-PRE Cable	29
USB A-B Cable	29
Terminal Blocks	29

## 10

TECHNICAL  
SPECIFICATIONS AND  
PARAMETERS

Product Tables	30-45
Frequency Bands	46



Please see Technical Specification and Parameters on Page 30



## COMPACT GSM II

*Contact controlled communicator, which can be used as an optional reporting device for alarm control panels, for reporting states of switches or outputs by call and SMS, or for remote control through relay outputs. Free gate opening function, optional temperature measuring and control.*

### Main Features:

- GSM communication
- 2 NO/NC contact inputs
- 2 NO relay outputs
- Possibility to connect temperature sensor (easyTEMP Compact)
- Programming by using software through USB or modem connection, or by SMS
- Reporting to monitoring station with Contact-ID protocol
- SMS sending with configurable message
- Events:
  - alarm on the 2 inputs
  - temperature threshold alarms (optional)
  - temperature sensor supervision (optional)
  - low voltage alarm
  - periodic test report
- Control of relay outputs (monostable/ bistable):
  - by input events
  - by phone call for free
  - by temperature events (optional)
- Car alarm adaptation (monitoring of rhythmical regular impulses)

PRODUCT MODELS: 2G



Please see Technical Specification and Parameters on Page 30



## ECOLINE GSM II

*Communicator for alarm control panels, which can be used as a universal GSM adapter for alarm systems, as a GSM line simulator, or for substituting a landline.*

### Main Features:

- GSM communication
- 1 telephone line output
- Forwarding of incoming SMS messages
- Push-button for GSM signal strength indication

PRODUCT MODELS: 2G



## 2G/3G/4G/IP COMMUNICATORS

**ADAPTER2**

*The adapter enables installing an alarm system where no landline is available but reporting to a monitoring station is required.*

**Main Features:**

- 2G/3G/4G/Wi-Fi communication
- Phone line emulator
- Programmable through USB and IP
- TEX, TELLMon and SIA IP protocol support
- 4 configurable NO/NC inputs
- 1 NO relay output, controllable by events
- Reporting to up to 4 remote monitoring receivers at the same time
- Remote firmware update
- Configurable contact ID codes for each input and service event
- Detailed event log
- Transparent serial port support

Please see Technical Specification and Parameters on Page 31



PRODUCT MODELS: 2G/3G/4G/WiFi

**ADAPTER2 PRO**

*Beyond the functionalities of the standard model, the PRO version is available with mobile application, IP camera support and e-mail and Push notification sending as well.*

**Main Features:**

- 2G/3G/4G/Wi-Fi communication
- Phone line emulator
- Programmable through USB and IP
- TEX, TELLMon and SIA IP protocol support
- 4 configurable NO/NC inputs
- 1 NO relay output, controllable by events
- Reporting to up to 4 remote monitoring receivers at the same time
- Remote firmware update
- Configurable contact ID codes for each input and service event
- Detailed event log
- Transparent serial port support
- E-mail sending
- Push notification
- IP camera support
- Multiplatform mobile application (iOs, Android)

Please see Technical Specification and Parameters on Page 31



PRODUCT MODELS: 2G/3G/4G/WiFi



Please see Technical Specification and Parameters on Page 32



## DUALCOM SIA IP

*Communicator for fire alarm control panels that converts contact input events to SIA IP, TELLMon or TEX-MVP format and sends them to the alarm monitoring receiver through IP channel on mobile GPRS network.*

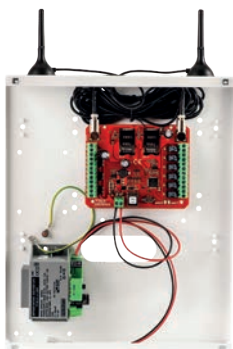
*It can be used for any control panel which has contact outputs or the contact outputs can be obtained with relays. Using this device, the input events are sent to the monitoring station's IP receiver over the GPRS network.*

*Due to the application of duplicated phone moduls, DUALCOM SIA IP guarantees a high security level, therefore it is suitable for high-risk signal transmission application (e.g. transmission of fire alarm events).*

### Main Features:

- Contact controlled communicator
- GPRS communication
- SIA IP, TELLMon and TEX-MVP protocols
- Parallel usage of two independent GSM modems
- Communicates directly with the receiver
- Reporting to up to 4 IP-addresses, meaning 2 primary IP addresses per network
- 6 NO/NC/EOL contact inputs
- 6 configurable relay outputs
- Supervision message with configurable interval of sending for automatic supervision of transmission channels
- No need for a central server, only an end-point IP receiver with Internet connection is necessary. The device works with TELLMon, TEX-MVP and other receivers which support the SIA IP protocol specified above.
- Possibility to separate e.g. alarm events and technical events (sending alarm events only to the alarm monitoring station and technical events only to the technical monitoring station)

PRODUCT MODELS: 2G/4G



## DUALCOM SIA IP KIT

*DUALCOM SIA IP with metal housing and TT25VA-12V5 power supply.*

PRODUCT MODELS: 2G/4G

Please see Technical Specification and Parameters on Page 32





## ecoline SIA IP

*Communicator for alarm control panels that converts DTMF-based Contact ID messages to SIA IP format and sends them towards remote monitoring receivers through IP channel.*

*It can be used with any alarm systems which are able to report to remote monitoring stations in Contact ID format, using PSTN landline.*

*There is no need for a central server, only an end-point IP receiver with Internet connection is necessary. The adapter is able to communicate with receivers which support the SIA IP protocol.*

Please see Technical Specification and Parameters on Page 33



### Main Features:

- GPRS/IP, GSM communication
- Direct communication with TELLMon and SIA IP compatible receivers through IP
- Direct communication with DTMF receivers through backup GSM call
- SIA IP and TELLMon protocols
- 1 telephone line output
- Forwards incoming SMS messages
- The programming software is available in the built-in USB storage
- The IP addresses and other settings can be configured by PC and also by SMS

PRODUCT MODELS: 2G



## IP BRIDGE

*Complex communicator, which offers a solution for connecting alarm systems to remote monitoring stations. It can be used as a standalone reporting device or even as an IP-based control device. IP Bridge makes it possible to remotely configure alarm control panels and also enables communication between devices with RS232 interface over the Internet.*

Please see Technical Specification and Parameters on Page 34- 35



### Main Features:

- Simulated phone line output
- 6 NO/NC (configurable) contact inputs
- 6 NO (open in default) relay outputs
- 1 RS232 input
- 1 Ethernet connector
- 1 USB host
- 3G/4G modem (depending on product model)
- Wired Internet / 3G-based / 4G-based IP communication
- TEX / TELLMon / SIA IP protocol support
- Transparent serial port support
- E-mail sending
- Radius server support
- NTP server support
- HTTP/HTTPS protocol support
- Built-in web server for configuration

PRODUCT MODELS: 3G/4G/ETHERNET



## IP BRIDGE PRO

*Beyond the functionalities of the standard model, the PRO version can be used in IT systems for router supervision or as an IP-based control device with IP camera support.*

Please see Technical Specification and Parameters on Page 34-35



PRODUCT MODELS: 3G/4G/ETHERNET



## PAGER4

*Contact controlled communicator, which can be used as an optional reporting device for alarm control panels, as a standalone GSM reporting device or as a 4/6-zone standalone alarm control device with arming and disarming option.*

### Main Features:

- 2G/3G/4G/Wi-Fi communication
- 4/6 configurable NO/NC zone inputs
- 2/1 NO relay outputs: controllable by events and also remotely
- Sends SMS with configurable message for each event to up to 10 phone numbers
- Voice call to up to 10 phone numbers with up to 15 recordable messages of 10 seconds each
- Extended service events
- Reporting to monitoring stations over the Internet to up to 4 IP addresses with SIA IP DC-09, TELLMon or TEX protocol
- Reports events to monitoring stations using up to 10 different notification templates, defining the priorities of the reporting channels
- Contact ID event codes configurable for each event, including partition and zone options
- Output control can be customized separately for each event, using different operation modes

Please see Technical Specification and Parameters on Page 36-37



PRODUCT MODELS: 2G/3G/4G/WiFi



## PAGER4 PRO

*Beyond the functionalities of the standard model, the PRO version is available with mobile application, IP camera support and e-mail and Push notification sending as well.*

Please see Technical Specification and Parameters on Page 36-37



PRODUCT MODELS: 2G/3G/4G/WiFi





## PAGER7

*Pager7 is the new generation of contact controlled communicators, with an active dashboard setting option and an event-action system configurable at will. Pager7 can be used as a standalone alarm control device, for assuring guarding tasks with a monitoring option through cameras, as an optional reporting device for alarm control panels, as well as in the fields of building engineering and agriculture (for controlling based on sensor information)*

### Main Features:

- 2G / 3G / 4G communication
- TELLMon / SIA IP protocol support
- 4/6 configurable NO/NC zone inputs
- 2/1 NO relay outputs: controllable by events and also remotely
- Independent alarm function (arming, disarming, entry and exit delay, 24h zones, adjustable input sensitivity)
- Optionally configurable Contact ID event codes for every input and custom event
- E-mail sending
- Configurable event-action pairs
- Active dashboard with active tiles configurable at will
- Assigning surveillance cameras to zones and, in case of alarm, displaying camera images and recording them
- Multiplatform desktop application (Windows, Linux, MacOS)
- Multiplatform mobile application (iOS, Android)

Please see Technical Specification and Parameters on Page 38



PRODUCT MODELS: 3G/4G



## PAGER8

*Contact controlled communicator with a register function (option of AND / OR relation), which can be used as a standalone alarm control device, for assuring guarding tasks with a monitoring option through cameras, as an optional reporting device for alarm control panels, as well as in the fields of building engineering and agriculture (for controlling based on sensor information)*

### Main Features:

- 2G / 3G / 4G communication
- TELLMon / SIA IP protocol support
- 6 configurable NO/NC zone inputs
- 4 LATCH relay outputs with NO and NC outputs
- Supports 8 registers (complex logical system)
- Independent alarm function
- Push notification sending
- E-mail sending
- Supports 16 IP cameras (forwarding of URL towards mobile application)
- Configurable event-action pairs
- Active dashboard with active tiles configurable at will
- Multiplatform desktop application (Windows, Linux, MacOS)
- Multiplatform mobile application (iOS, Android)

Please see Technical Specification and Parameters on Page 39



PRODUCT MODELS: 3G/4G



Please see Technical Specification and Parameters on Page 40



## GATE CONTROL 20

*Control of automated gates, garage doors and barriers by mobile phone without a remote control. No radio interference or gate opened by accident. Possibility for adding up to 20 users. No control distance limits!*

### Main Features:

- Remote control of automated gates, barriers and other controllable electric devices by free GSM call
- Control of 2 different gates, using caller identification and by hiding caller ID
- Possibility to register up to 20 users
- Forwards the fault reports or other contact events of the gate control panel by SMS using 2 contact inputs
- SMS sending limit
- Forwards incoming SMS messages (for usage with prepaid SIM cards)
- Programming and status query by SMS

PRODUCT MODELS: 2G



Please see Technical Specification and Parameters on Page 40



## GATE CONTROL PRO 20

*Control of automated gates, garage doors and barriers by mobile application over the Internet or by GSM call. If position limit switches are installed, the opened/closed state of the gate can be viewed in the mobile application and the device can also send notification by SMS or Push if the gate fails to open or close. Possibility for adding up to 20 users with configurable permissions (e.g. restriction of access beyond labour hours). Storing the last 1,200 events with identification of users and time of control. No control distance limits!*

### Main Features:

- Control of automated gates and barriers by mobile application over the Internet or by GSM call
- Option for controlling two different gates or barriers with the same device
- 20-user variant
- Notification sending if the gate or barrier fails to open or close
- Shows the open / closed state of the gate or barrier in the mobile application
- Status reporting of 4 contact inputs via e-mail, SMS or call
- Transmits doorbell activity to mobile phone
- ONVIF camera support, making camera pictures available in the mobile application
- Configurable user permissions and entry periods
- Configurable automatic timed control
- Event log and report sending in e-mail

PRODUCT MODELS: 2G/3G/4G/WIFI





## GATE CONTROL BASE 1000

*Controllable from mobile phone, without any remote control. No radio interference or gate opened by accident. Possibility for adding up to 1,000 users with configurable permissions (e.g. restriction of access beyond labour hours). Storing the last 1,200 events with identification of users and time of control. The event log can even be downloaded remotely (over the Internet), stored electronically or printed. Sends notification in SMS and logs if the gate has stayed open or if the photocell has been blocked (optional). No control distance limits!*

### Main Features:

- Control of the opening and closing of automated gates and barriers via free GSM call, using caller identification
- SMS notifications on the malfunctions of the gate:
  - blocking of the photocell
  - forced opening of the barrier housing
  - barrier arm or gate jam
- Control (opening / closing) can only be initiated from authorized phone numbers preconfigured in the device or, depending on the settings, from any phone number, without limitations
- Selectable control mode, depending on gate type

Please see Technical Specification and Parameters on Page 40



PRODUCT MODELS: 2G/3G/4G



## GATE CONTROL PRO 1000

*Control of automated gates, garage doors and barriers by mobile application over the Internet or by GSM call. If position limit switches are installed, the opened/closed state of the gate can be viewed in the mobile application and the device can also send notification by SMS or Push if the gate fails to open or close. Possibility for adding up to 1,000 users with configurable permissions (e.g. restriction of access beyond labour hours). Storing the last 1,200 events with identification of users and time of control. No control distance limits!*

### Main Features:

- Control of automated gates and barriers by mobile application over the Internet or by GSM call
- Option for controlling two different gates or barriers with the same device
- 1,000-user variant
- Possibility for assigning up to 2,000 mobile phones
- Notification sending if the gate or barrier fails to open or close
- Shows the open / closed state of the gate or barrier in the mobile application
- Status reporting of 4 contact inputs via e-mail, SMS or call
- Transmits doorbell activity to mobile phone
- ONVIF camera support, making camera pictures available in the mobile application
- Configurable user permissions and entry periods
- Configurable automatic timed control
- Event log and report sending in e-mail

Please see Technical Specification and Parameters on Page 40



PRODUCT MODELS: 2G/3G/4G/WiFi



## IP-BASED REMOTE MONITORING RECEIVERS



### TELLMon

*Remote monitoring IP receiver for receiving reports from TELL-made SIA IP and TEX communicators.*

#### Main Features:

- Standalone remote monitoring IP receiver based on TELLMon protocol standard
- Compatibility with TEX and TELLMon protocols
- Optional 3G or 4G modem (direct connection with communicators through private APN)
- Reliable and stable LINUX-based operating system
- Data transfer function over serial port: when being fitted into an existing system, TELLMon is capable to forward the communication of other connected receivers towards the alarm monitoring software (transparent data forwarding)
- Simple and clear graphical interface, which can be accessed remotely for configuration and monitoring as well
- Capable for simultaneously receiving reports from even up to 2,000 communicators
- Compact, quiet and durable, with low power consumption

Please see Technical Specification and Parameters on Page 41



PRODUCT MODELS: 3G/4G/LAN only



### QUECTEL UC20 MINI PCIE 3G MODEM

*Mini PCIe 3G modem for TELLMon receivers.  
Accessories: GSM antenna with GSM cable and connector.*



#### COMPATIBILITY

- TELLMon



### QUECTEL EC25 MINI PCIE 4G MODEM

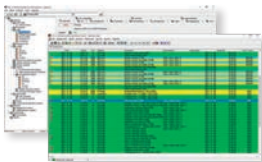
*Mini PCIe 4G modem for TELLMon receivers.  
Accessories: GSM antenna with GSM cable and connector.*



#### COMPATIBILITY

- TELLMon

## ALARM MONITORING SOFTWARE



Please see Technical Specification and Parameters on Page 41



### TMS LIGHT

*Complex, expandable, modern and reliable alarm monitoring software with modular structure for use on single PC.*

#### Main Features:

- Complex and expandable alarm monitoring software
- Modern, reliable and high-security modular structure
- Diverse and extensive features

#### System Modules:

- Administration Module
- Operator Module
- Data Manager Module
- Data Saving Module
- Parameter Manager Module
- Map Generator

#### Options for Expansion:

- E-mail Module (initiated or automated e-mail sending)
- SMS Module (automated SMS sending triggered by an incoming event)
- WebReport Module (access to event logs over the Internet)
- Analogue Dialer Module (dialing phone numbers with a single click)
- VoIP Dialer Module (dialing phone numbers via VoIP with a single click)



Please see Technical Specification and Parameters on Page 41



### TMS PRO

*Complex and expandable alarm monitoring software for use on several PCs. The software modules can run on different machines. Modern and reliable, with a high-security modular structure.*

#### Main Features:

- Version for use on several PCs; the software modules can run on different machines
- Complex and expandable alarm monitoring software
- Modern, reliable and high-security modular structure
- Diverse and extensive features

#### System Modules:

- Administration Module
- Operator Module
- Data Manager Module
- Data Saving Module
- Parameter Manager Module
- Map Generator
- Remote Data Visualization Module
- Database Server Verification Module

#### Options for Expansion:

- E-mail Module (initiated or automated e-mail sending)
- SMS Module (automated SMS sending triggered by an incoming event)
- WebReport Module (access to event logs over the Internet)
- Analogue Dialer Module (dialing phone numbers with a single click)
- VoIP Dialer Module (dialing phone numbers via VoIP with a single click)



## ALARMTRACK

Real-time forwarding of alarm monitoring station events to mobile devices. Optional interface for TMS systems. Mobile application to assist the work of emergency response teams. Alarm details are forwarded to emergency response teams. Alarm site address details are transferred to navigation application. Automatic notification through the TMS system. Option of logged feedback.

### COMPATIBILITY

- TMS LIGHT
- TMS PRO



## IP CAMERA DETECTOR

Application which helps to find IP cameras in a given network to ease the synchronization of IP cameras and TELL devices.

### Main Features:

- Detects camera profile settings
- Obtains available stream and snapshot URLs
- Authentication management
- Interface management
- IPV4/IPV6 support

### Supported Operating Systems:

- Windows 64-bit
- MacOS
- Linux Ubuntu/Debian

The screenshot displays the web interface of the IPCAMERA DETECTOR application. It is divided into two main sections: 'INTERFACES' and 'CAMERAS'.

**INTERFACES (Founded interface):** This section shows two network interfaces: eth0 and eth1. Each interface has a 'DETECT CAMERAS' button. The detected IP addresses are listed below each interface.

Interface	MAC	IPv4	IPv6
eth0	01:02:03:0a:0b:0c	192.168.1.108	fe80::a00:27ff:fe4e:66a1
eth1	01:02:03:0a:0b:0c	192.168.1.109	fe80::a00:27ff:fe4e:66a2

**CAMERAS:** This section shows a detailed view of a detected camera profile for interface eth0 at IP 192.168.1.136. It includes a table of profile parameters.

No.	Profile	1x Snapshot	Snapshot URL	1x Stream	Stream URL	Resolution	FPS	Encoding	Quality
1	MAIN	✓	http://192.168.1.136	✓	http://192.168.1.136	1920x1080	30	MPEG2	High
2	Profile_02	✗	http://192.168.1.136	✗	http://192.168.1.136	1280x720	25	MPEG2	Low
3	Profile_03	✓	http://192.168.1.136	✓	http://192.168.1.136	1920x1080	30	MPEG2	High
4	Profile_04	✓	http://192.168.1.136	✗	http://192.168.1.136	1280x720	24	JPEG	Medium

## PERSONAL MONITORING SYSTEM



Please see Technical Specification and Parameters on Page 42



### EASYAID MONITORING

*General emergency signaling device, which can be used to report an accident, attack or sickness to a dispatcher centre or monitoring station by simply pressing a button. The neck-worn pendant Emergency Button assures the patient's freedom of movement within the range of the device. With the help of pre-recordable daily reminders the patient's drug treatment can be promoted. The alarm monitoring station can immediately obtain information on the patient's status through a voice call. The device is easy to use, designed expressly for the elderly to use in case of emergency. The device supports up to 2 RF transmitters (the package includes 1 button).*

#### Main Features:

- Alarm reporting to monitoring station by pressing a button
- Answers incoming calls automatically in hands-free mode
- Plays pre-recorded messages as daily reminders
- Alarm reporting to monitoring station when temperature thresholds are exceeded
- Reports nursing visit to monitoring station
- Neck-worn pendant Emergency Button
- Digital display with clock

PRODUCT MODELS: 2G



Please see Technical Specification and Parameters on Page 42

### EASYAID MOBILE

*easyAID, our personal monitoring system with mobile application, consists of three parts: IQRF Emergency Button, easyAID base station and the related mobile application.*

*When in operation, the base station forwards the signals arriving from the Emergency Button towards the mobile application in the form of Push notification or backup SMS. Upon designing the product, a great emphasis was put on simplicity, which becomes apparent in case of both installation and use.*





Please see Technical Specification and Parameters on Page 42



## EASYAID GSM

General emergency signaling device, which can be used to report an accident, attack or sickness by SMS or call, by simply pressing a button. The neck-worn pendant Emergency Button assures the patient's freedom of movement within the range of the device. With the help of pre-recordable daily reminders the patient's drug treatment can be promoted. Information on the patient's status can be immediately obtained through a voice call. The device is easy to use, designed expressly for the elderly to use in case of emergency. **The device supports up to 2 RF transmitters (the package includes 1 button).**

### Main Features:

- Initiates phone call and/or sends SMS by pressing a button
- Answers incoming calls automatically in hands-free mode
- Speed dialing function
- Plays pre-recorded messages as daily reminders
- Initiates a call and sends SMS when temperature thresholds are exceeded
- Reports nursing visit by call and/or SMS
- Neck-worn pendant Emergency Button
- Digital display with clock

PRODUCT MODELS: 2G



## EASYAID IQRF EMERGENCY BUTTON

*easyAID IQRF Emergency Button is made for the elderly and the diseased, as well as for people with special needs, therefore upon its design simplicity was in our main focus. The emergency transmitter is put into operation by pressing the red-coloured Emergency Button, from where the base station forwards the signals either towards the alarm monitoring server or towards the mobile application. With one easyAID device you can take care of even two of your relatives at the same time, as two Emergency Buttons can be used with each base station.*

### COMPATIBILITY:

- easyAID Monitoring
- easyAID Mobile App
- easyAID GSM

## GPS-BASED VEHICLE TRACKING SYSTEM



### EASYTRACK II BASE

*Vehicle-tracking device with built-in GPS receiver, accredited for E-Toll declaration in Hungary. Among many others, it enables generating reports and diagrams, viewing vehicle positions, vehicle tracks and stop points on a map surface, as well as generating alerts and notifications based on configurable conditionalities, thus becoming an indispensable part of vehicle tracking and fleet management.*

Please see Technical Specification and Parameters on Page 43



#### Main Features (easyTRACK II Base, easyTRACK II FULL):

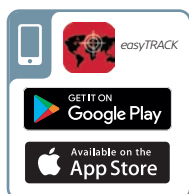
- Suitable for E-Toll declaration in Hungary
- GPRS data transfer
- Built-in GPS receiver
- Connectable to car alarms
- Programmable through USB and IP
- Visualization and logging of positions and routes
- Separation of business and private vehicle usage
- Evaluation of speed, parking, trip duration, etc.
- Sends SMS with actual vehicle position and traffic data
- Actions triggered by events:
  - forwards car alarm signals to remote monitoring station
  - sends SMS to the user's phone
- Independent alarm functions: position change monitoring at stopped engine, alarms triggered by contact inputs (e.g. emergency button)

PRODUCT MODELS: Versions with internal or external antenna, 2GE/4GE/2GI/4GI





Please see Technical Specification and Parameters on Page 43



## EASYTRACK II FULL

*Vehicle-tracking device with built-in GPS receiver, accredited for E-Toll declaration in Hungary. Among many others, it enables generating reports and diagrams, viewing vehicle positions, vehicle tracks and stop points on a map surface, as well as generating alerts and notifications based on configurable conditionalities, thus becoming an indispensable part of vehicle tracking and fleet management. Product variant with extra features.*

### Operational Options (easyTRACK II Base, easyTRACK II FULL):

- Web server service:  
<https://info.easytrack.hu/>  
— or —
- Individual server for monitoring station
- Web-based visualization on Google Maps™ surface
- Private POI management, speed and fuel diagrams, route reports, vehicle uptime reports, refueling reports
- Low operational costs

PRODUCT MODELS: Versions with internal or external antenna, 2GE/4GE/2GI/4GI



Please see Technical Specification and Parameters on Page 43.



## CAN ADAPTER

*Optional CAN Adapter for easyTRACK II Base and easyTRACK II FULL devices. The adapter makes different data read from the CAN bus of the vehicle available, which are used for reports, diagrams and event notifications afterwards.*

### Available CAN Data (vehicle-dependent):

- vehicle speed
- engine RPM
- vehicle mileage
- total fuel consumption
- acceleration pedal position

### COMPATIBILITY

- *easyTRACK II*



## DIESEL SENSOR

*Capacitive fuel level measuring probe for easyTRACK II BASE and easyTRACK II FULL devices, for diesel-powered vehicles.*

Please see Technical Specification and Parameters on Page 43

Diesel Sensor (75cm)



Diesel Sensor (100cm)



### Main Features:

- By using Diesel Sensor, refuelling, fuel consumption and fuel drainage can be graphically displayed and evaluated on the easyTRACK web interface, as well as downloaded in the form of reports
- To be installed in the vehicle's fuel tank
- The required length can be obtained by cutting the tube upon installation
- Standard probe length: 75 cm or 100 cm
- Cable and protecting tube length: 7 m
- Casing protection: IP68
- Recommended for fuel level monitoring of vans, trucks and machinery

### COMPATIBILITY:

- *easyTRACK II*



## EASYFCL

*Optional fuel tank cap lock with opening sensor for easyTRACK II Base and easyTRACK II FULL devices, for Ø80 mm and Ø100 mm fuel inlets.*

### Main Features:

- Includes an electronic opening sensor
- By using easyFCL, fuel cap opening alerts and indications can be displayed in reports
- Provides mechanical protection against unauthorized opening and fuel theft
- Cable length: 7.5 m (with a 2.5 m protecting tube)
- Robust design

easyFCL80



easyFCL100



### COMPATIBILITY:

- *easyTRACK II*

Please see Technical Specification and Parameters on Page 44





Please see Technical Specification and Parameters on Page 44



#### COMPATIBILITY:

- *easyTRACK II FULL*

## EASYRFID

*Optional proximity reader for driver identification, for easyTRACK II FULL devices. The reader enables the system to identify and assign drivers to given journeys, which information becomes thereby available in downloadable reports.*

#### Main Features:

- Driver identification
- Switching between business and private vehicle usage modes
- Operating frequency: 125 kHz
- Accessories: 2 pcs of RFID keyfobs are included



Please see Technical Specification and Parameters on Page 44



#### COMPATIBILITY:

- *easyTRACK II*

## EASYTEMP

*Optional temperature sensor for easyTRACK II BASE and easyTRACK II FULL devices.*

#### Main Features:

- By using easyTEMP, temperature monitoring can be graphically displayed and evaluated on the easyTRACK web interface, as well as downloaded in the form of reports
- One easyTRACK II device supports up to 3 temperature sensors
- The casing of the sensor is made of acid-proof stainless steel
- The sensor is supplied with a 5 m cable and a 4.8 m cable protecting tube, as well as mounting clips
- Measuring temperature range: -30 °C - + 70 °C



Please see Technical Specification and Parameters on Page 44



#### COMPATIBILITY:

- *easyTRACK II*

## EASYRPM MONITOR II

*Optional engine RPM interface for easyTRACK II BASE and easyTRACK II FULL devices.*

#### Main Features:

- The interface module detects engine revolution signals from the power terminals of the alternator and provides output signals proportional to the real engine revolution. By using easyRPM Monitor II, effective working hours, idle time and journey time can be evaluated in the uptime report downloadable from the easyTRACK web interface, just as average fuel consumptions for journey and working, if a fuel probe is also installed in the vehicle/machine. Its primary purpose of use is to determine the operating status of machinery.
- easyRPM Monitor II interface is to be installed only if there is no star-point output (usually marked with "W") on the alternator of the given vehicle/machine. If there is such an output there, then is no need to install this interface, as the star-point can directly be connected to the "RPM" input of the easyTRACK II device.

## POWER SUPPLIES

**TT25VA-12V5**

*Power supply TT25VA-12V5 and the related automatic battery charger provide an uninterruptible and steady power supply to the connected fire reporting device.*

*It successfully bridges the network outages considered to be critical in the operation of fire reporting devices and it also provides effective protection against overload. Transformer performance is 25VA.*

Please see Technical Specification and Parameters on Page 45

**TT40VA-12V5**

*Power supply TT40VA-12V5 and the related automatic battery charger provide an uninterruptible and steady power supply to the connected fire reporting device.*

*It successfully bridges the network outages considered to be critical in the operation of fire reporting devices and it also provides effective protection against overload. Transformer performance is 40VA.*

Please see Technical Specification and Parameters on Page 45

**TT40VAC-16VAC/24VDC**

*Power supply TT40VAC-16VAC/24VDC is made for the uninterruptible power supply of alarm systems and their communicators.*

*It successfully bridges the joint supply of the alarm control panel and the communicator, as well as the limited loadability of the AUX output of the alarm panels! Only one battery is needed to ensure uninterruptible operation and it also provides effective protection against overload. Transformer performance is 40VA.*

Please see Technical Specification and Parameters on Page 45





## GSM 2J-300 ANTENNA

*Antenna for GSM and 2G/3G-based TELL communicators, gate controllers and emergency call devices.*



### Main Features:

- 0 dB omni-directional GSM antenna
- Black ABS casing
- Magnetic mount
- Supplied with a 2.5 m cable and an FME-F connector

### COMPATIBILITY:

- *Adapter2*
- *Compact GSM II*
- *DUALCOM*
- *ecoLINE GSM II / SIA IP*
- *Gate Control 20*
- *Gate Control BASE*
- *Gate Control PRO 20/1000*
- *easyAID*
- *Pager4*
- *Pager7*



## METAL CASE + POWER SUPPLY

*Optional metal case and power supply for DUALCOM SIA IP devices.*

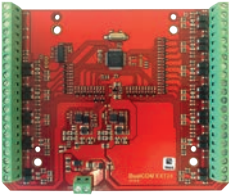
Supplied with Power Supply TT25VA-12V5, the parameters of which are as follows:

- Overload protection with automatic recovery
- Short-circuit protection (polyfuse)
- Overheating protection
- Protection against battery reverse polarity (polyfuse and unidirectional suppressor)



### COMPATIBILITY:

- *DUALCOM SIA IP*



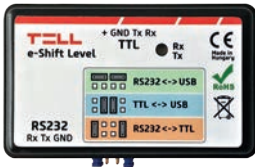
## DUALCOM EXT24-D

24-input expansion module for DUALCOM SIA IP devices.

### COMPATIBILITY:

- DUALCOM SIA IP

Please see Technical Specification and Parameters on Page 45



## E-SHIFT LEVEL INTERFACE

The e-Shift Level Interface is a multifunctional serial port adapter, which makes it possible to adapt a 5V TTL port to an RS232 serial port or to a USB port, as well as to adapt an RS232 serial port to a USB port.



## E-SHIFT-D CABLE

Link cable for e-Shift Level Interface compatible with DSC alarm control panels.





## E-SHIFT-PAR CABLE

*Link cable for e-Shift Level Interface compatible with Paradox alarm control panels.*

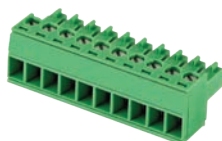


## E-SHIFT-PRE CABLE

*Link cable for e-Shift Level Interface compatible with Premier alarm control panels.*



## USB A-B CABLE



## TERMINAL BLOCKS

*Terminal blocks are offered to all Gate Control BASE, Gate Control PRO, Adapter2, IP Bridge, Pager4 and Pager7 product variants. The relevant terminal block is available and can be ordered separately to each of our products with connectable terminal blocks.*



## COMPACT GSM II

Please find the General Description of the product on Page 8

### PARAMETERS

Contact inputs	2
Configurable inputs (NO/NC)	✓
Adjustable input sensitivity	✓
Relay outputs	2
Output control through free GSM call	✓
Output control by SMS	✓
GSM voice call	✓
SMS sending	✓
DTMF-based reporting to monitoring station	✓
SIA DC-05 (DTMF) protocol	✓
Programming method	USB/GSM data call (CSD)/SMS
Programming software	✓
User phone numbers for forwarding incoming SMS messages	1
User phone numbers for reporting	4
User phone numbers for output control	4 / Unlimited
Monitoring station phone numbers	1
Individual reporting to monitoring station	✓
Configurable internal Contact ID event codes	✓
Security password	✓
Caller identification	✓
Possibility to connect temperature sensor (easyTEMP)	✓
Individual SMS sending to user phone numbers with predefinable message	✓
Temperature monitoring and intervention through the outputs (optional)	✓
Periodic test report	✓
Alarm sending to user phone numbers with siren tone being used	✓
Alarm restriction	✓
Pre-recordable voice message sending to user phone numbers	✓ / 2 x 6 mp
Selectable confirmation request from user phone numbers	✓

### TECHNICAL SPECIFICATION

Transmission channel	GSM
Operating temperature	-20 °C – +70 °C
Supply voltage	12-30V DC
Current consumption (maximum)	200 mA @ 12V DC
Current consumption (nominal)	50 mA @ 12V DC
Casing	PCB + metal case
Terminal connector design	Mounted on the panel
Dimensions	100x70x19 mm
Weight	80 g



## ECOLINE GSM II

Please find the General Description of the product on Page 8

### PARAMETERS

DTMF-based reporting to monitoring station	✓
SIA DC-05 (DTMF) protocol	✓
Programming method	Using a phone device
User phone numbers for forwarding incoming SMS messages	1
Voice dialer adaptation	✓
Phone line emulation	✓
Adaptation of alarm control panels to mobile network	✓

### TECHNICAL SPECIFICATION

Transmission channel	GSM
Operating temperature	-20 °C – +70 °C
Supply voltage	12-30V DC
Current consumption (maximum)	400 mA @ 12V DC
Current consumption (nominal)	110 mA @ 12V DC
Casing	PCB + metal case
Dimensions	100x70x19 mm
Weight	80 g

## Comparative Chart of ADAPTER2 MODELS



Please find the General Description of the product on Page 9

TECHNICAL SPECIFICATION	Adapter2 - 4G.IN4.R1	Adapter2 WiFi - IN4.R1	Adapter2 PRO - 4G.IN4.R1	Adapter2 PRO WiFi - IN4.R1
	Adapter2 - 3G.IN4.R1		Adapter2 PRO - 3G.IN4.R1	
	Adapter2 - 2G.IN4.R1		Adapter2 PRO - 2G.IN4.R1	
Selectable modem types	2G/3G/4G	–	2G/3G/4G	–
Transmission channel	2G/3G/4G/GSM	WiFi	2G/3G/4G/GSM	WiFi
Operating temperature	-20 °C – +70 °C	-20 °C – +70 °C	-20 °C – +70 °C	-20 °C – +70 °C
Supply voltage	12-24 VDC	12-24 VDC	12-24 VDC	12-24 VDC
Current consumption (maximum)	500 mA @ 12 VDC	500 mA @ 12 VDC	500 mA @ 12 VDC	500 mA @ 12 VDC
Current consumption (nominal)	120 mA @ 12 VDC	120 mA @ 12 VDC	120 mA @ 12 VDC	120 mA @ 12 VDC
Casing	Plastic	Plastic	Plastic	Plastic
Terminal connector design	Connectable	Connectable	Connectable	Connectable
Dimensions	84x72x32 mm	84x72x32 mm	84x72x32 mm	84x72x32 mm
Weight	200 g	200 g	200 g	200 g

### PARAMETERS

Contact inputs	4	4	4	4
Configurable inputs (NO/NC)	✓	✓	✓	✓
Adjustable input sensitivity	✓	✓	✓	✓
Relay outputs	1	1	1	1
Output activation on GSM fault	✓	–	✓	–
GSM voice call	✓	–	✓	–
SMS sending	✓	–	✓	–
E-mail sending	–	–	✓	✓
Push notification	–	–	✓	✓
IP-based reporting to monitoring station	✓	✓	✓	✓
DTMF-based reporting to monitoring station	✓	–	✓	–
SIA IP DC-09 protocol	✓	✓	✓	✓
SIA DC-05 (DTMF) protocol	✓	✓	✓	✓
TELLMon protocol	✓	✓	✓	✓
TEX protocol	✓	✓	✓	✓
Programming method	USB / IP	USB / IP	USB / IP	USB / IP
Programming software	✓	✓	✓	✓
User phone numbers for forwarding incoming SMS messages	1	–	1	–
User phone numbers for reporting	4	–	4	–
Monitoring station IP addresses	4	4	4	4
Individual reporting to monitoring station	✓	✓	✓	✓
Configurable internal Contact ID event codes	✓	✓	✓	✓
Automatic dialing (emergency call)	✓	–	✓	–
Filtering of Contact ID event codes	✓	✓	✓	✓
Event logs / Number of stored events	✓ / 1000	✓ / 1000	✓ / 1000	✓ / 1000
Individual SMS sending to user phone numbers with predefinable message	✓	–	✓	–
Sending SMS generated from Contact ID event codes to user phone numbers	✓	–	✓	–
Phone line emulation	✓	✓	✓	✓
NTP server support	✓	✓	✓	✓
Adaptation of alarm control panels to mobile network	✓	–	✓	–
Mobile application	–	–	✓	✓
IP camera support	–	–	✓	✓



## DUALCOM SIA IP

Please find the General Description of the product on Page 10

### PARAMETERS

Contact inputs	6
Configurable inputs (NO/NC)	✓
EOL inputs	✓
Adjustable input sensitivity	✓
Relay outputs	6
IP-based reporting to monitoring station	✓
SIA IP DC-09 protocol	✓
TELLMon protocol	✓
TEX protocol	✓
Programming method	USB / IP
Programming software	✓
Monitoring station IP addresses	4
Individual reporting to monitoring station	✓
Configurable internal Contact ID event codes	✓
Built-in internal clock	✓
Dual SIM management	✓

### TECHNICAL SPECIFICATION

Dual GSM (2 independent GSM modules)	✓
Transmission channel	2G/3G/4G
Operating temperature	-20 °C – +70 °C
Supply voltage	12-30VDC
Current consumption (maximum)	400 mA @ 12V DC
Current consumption (nominal)	110 mA @ 12V DC
Casing	None (PCB)
Terminal connector design	Mounted on the panel
Dimensions	100x70x19 mm
Weight	280 g



## DUALCOM SIA IP KIT

Please find the General Description of the product on Page 10

### PARAMETERS

Contact inputs	6
Configurable inputs (NO/NC)	✓
EOL inputs	✓
Adjustable input sensitivity	✓
Relay outputs	6
IP-based reporting to monitoring station	✓
SIA IP DC-09 protocol	✓
TELLMon protocol	✓
TEX protocol	✓
Programming method	USB / IP
Programming software	✓
Monitoring station IP addresses	4
Individual reporting to monitoring station	✓
Configurable internal Contact ID event codes	✓
Built-in internal clock	✓
Dual SIM management	✓
Metal case + power supply	✓

### TECHNICAL SPECIFICATION

Dual GSM (2 independent GSM modules)	✓
Transmission channel	2G / GSM
Operating temperature	-20 °C - +70 °C
Supply voltage	12-30V DC
Current consumption (maximum)	400 mA @ 12 VDC, 200 mA @ 24 VDC
Current consumption (nominal)	70 mA @ 12 VDC, 40 mA @ 24 VDC
Casing	Metal case + power supply
Terminal connector design	Mounted on the panel
Dimensions	116x100x25 mm
Weight	280 g



## ECOLINE SIA IP



Please find the General Description of the product on Page 11

### PARAMETERS

GSM voice call	✓
SMS sending	✓
DTMF-based reporting to monitoring station	✓
SIA IP DC-09 protocol	✓
TELLMon protocol	✓
SIA DC-05 (DTMF) protocol	✓
Programming method	<b>USB / SMS</b>
Programming software	✓
User phone numbers for forwarding incoming SMS messages	<b>1</b>
Monitoring station IP addresses	<b>4</b>
Built-in internal clock	✓
Phone line emulation	✓
Adaptation of alarm control panels to mobile network	✓

### TECHNICAL SPECIFICATION

Transmission channel	<b>2G / GSM</b>
Operating temperature	<b>-20 °C – +70 °C</b>
Supply voltage	<b>12-30V DC</b>
Current consumption (maximum)	<b>400 mA @ 12V DC</b>
Current consumption (nominal)	<b>80 mA @ 12V DC</b>
Casing	<b>PCB + metal case</b>
Terminal connector design	<b>Mounted on the panel</b>
Dimensions	<b>100x70x19 mm</b>
Weight	<b>80 g</b>

Filtering of Contact ID event codes	✓	✓	✓	✓	✓
Event logs / Number of stored events	✓ / 500	✓ / 500	✓ / 500	✓ / 500	✓ / 500
Mobile application	✓	✓	✓	✓	✓
Individual e-mail sending with predefinable message	-	-	✓	✓	✓
Individual SMS sending to user phone numbers with predefinable message	-	✓	✓	✓	✓
Periodic test report	✓	✓	✓	✓	✓
Alarm sending to user phone numbers with siren tone being used	-	-	✓	✓	✓
Alarm restriction	✓	✓	✓	✓	✓
Pre-recordable voice message sending to user phone numbers	-	-	✓	✓	✓
Sending SMS generated from Contact ID event codes to user phone numbers	-	-	✓	✓	✓
Phone line emulation	✓	✓	✓	✓	✓
NTP server support	✓	✓	✓	✓	✓
RADIUS server support	✓	✓	✓	✓	✓
Transparent serial port support	✓	✓	✓	✓	✓
Router supervision	-	-	✓	✓	✓
IP camera support	-	-	✓	✓	✓

## Comparative Chart of IP BRIDGE MODELS



Please find the General Description of the product on Page 12

TECHNICAL SPECIFICATION	IP Bridge – IM6.R6		IP Bridge – 4G.IM6.R6 IP Bridge – 3G.IM6.R6		IP Bridge PRO – IM6.R6		IP Bridge PRO – 4G.IM6.R6 IP Bridge PRO – 3G.IM6.R6	
	Selectable modem types	LAN	3G/4G	3G/4G	LAN	3G/4G	3G/4G	
Transmission channel	LAN	2G/3G/4G/GSM	2G/3G/4G/GSM	2G/3G/4G/GSM	LAN	3G/4G	2G/3G/4G/GSM	
Operating temperature	-20 °C – +70 °C	-20 °C – +70 °C	-20 °C – +70 °C	-20 °C – +70 °C	-20 °C – +70 °C	3G/4G	-20 °C – +70 °C	
Supply voltage	12-24 VDC	12-24 VDC	12-24 VDC	12-24 VDC	12-24 VDC	3G/4G	12-24 VDC	
Current consumption (maximum)	400 mA @ 12 VDC	400 mA @ 12 VDC	400 mA @ 12 VDC	400 mA @ 12 VDC	400 mA @ 12 VDC	3G/4G	400 mA @ 12 VDC	
Casing	Plastic	Plastic	Plastic	Plastic	Plastic	3G/4G	Plastic	
Dimensions	130x69x19 mm	130x69x19 mm	130x69x19 mm	130x69x19 mm	130x69x19 mm	3G/4G	130x69x19 mm	
Weight	200 g	200 g	200 g	200 g	200 g	3G/4G	200 g	

### PARAMETERS

Contact inputs	6	6	6	6
Configurable inputs (NO/NC)	✓	✓	✓	✓
EOL inputs	✓	✓	✓	✓
Adjustable input sensitivity	✓	✓	✓	✓
Relay outputs	6	6	6	6
E-mail sending	✓	✓	✓	✓
Push notification	✓	✓	✓	✓
VoIP voice call	✓	✓	✓	✓
VoIP SMS sending	-	-	✓	✓
IP-based reporting to monitoring station	✓	✓	✓	✓
SIA IP-DC-09 protocol	✓	✓	✓	✓
TELLMion protocol	✓	✓	✓	✓
TEX protocol	✓	✓	✓	✓
Programming method	IP	IP	IP	IP
Monitoring station IP addresses	6	6	6	6
Individual reporting to monitoring station	✓	✓	✓	✓
Configurable internal Contact ID event codes	✓	✓	✓	✓
Security password	✓	✓	✓	✓

Push notification	-	-	✓	✓	✓	✓
IP-based reporting to monitoring station	✓	✓	✓	✓	✓	✓
DTMF-based reporting to monitoring station	✓	-	✓	✓	-	-
SIA IP DC-09 protocol	✓	✓	✓	✓	✓	✓
SIA DC-05 (DTMF) protocol	✓	✓	✓	✓	✓	✓
TELLMon protocol	✓	✓	✓	✓	✓	✓
TEEX protocol	✓	✓	✓	✓	✓	✓
Programming method	USB/IP	USB/IP	USB/IP	USB/IP	USB/IP	USB/IP
Programming software	✓	✓	✓	✓	✓	✓
User phone numbers for forwarding incoming SMS messages	1	-	1	1	-	-
User phone numbers for reporting	10	-	10	10	-	-
User phone numbers for output control	10	-	10	10	-	-
Monitoring station IP addresses	4	4	4	4	4	4
Monitoring station phone numbers	2	2	2	2	2	2
Individual reporting to monitoring station	✓	✓	✓	✓	✓	✓
Configurable internal Contact ID event codes	✓	✓	✓	✓	✓	✓
Security password	✓	✓	✓	✓	✓	✓
Filtering of Contact ID event codes	✓	✓	✓	✓	✓	✓
Event logs / Number of stored events	✓ / 1000	✓ / 1000	✓ / 1000	✓ / 1000	✓ / 1000	✓ / 1000
Caller identification	✓	✓	✓	✓	✓	✓
Mobile application	-	-	-	✓	✓	✓
Individual SMS sending to user phone numbers with predefinable message	-	-	✓	✓	-	-
Periodic test report	✓	✓	✓	✓	✓	✓
Alarm restriction	✓	✓	✓	✓	✓	✓
Alarm control panel function (arming/disarming, entry and exit delay)	✓	✓	✓	✓	✓	✓
Selectable 24h zones	✓	✓	✓	✓	✓	✓
Selectable confirmation request from user phone numbers	✓	✓	✓	✓	✓	✓
NTP server support	✓	✓	✓	✓	✓	✓

## Comparative Chart of PAGER4 MODELS



Please find the General Description of the product on Page 13

	<b>Pager4 - 4G, IN4, R2, Pager4 - 4G, IN6, R1</b>	<b>Pager4 - 3G, IN4, R2, Pager4 - 3G, IN6, R1</b>	<b>Pager4 - 2G, IN4, R2, Pager4 - 2G, IN6, R1</b>	<b>Pager4 PRO - 4G, IN4, R2, Pager4 PRO - 4G, IN6, R1</b>	<b>Pager4 PRO - 3G, IN4, R2, Pager4 PRO - 3G, IN6, R1</b>	<b>Pager4 PRO - 2G, IN4, R2, Pager4 PRO - 2G, IN6, R1</b>
Selectable modem types	2G/3G/4G	-	-	2G/3G/4G	-	-
Transmission channel	2G/3G/4G/GSM	WiFi	WiFi	2G/3G/4G/GSM	WiFi	WiFi
Operating temperature	-20 °C – +70 °C	-20 °C – +70 °C	-20 °C – +70 °C	-20 °C – +70 °C	-20 °C – +70 °C	-20 °C – +70 °C
Supply voltage	12-30 VAC/DC	12-30 VAC/DC	12-30 VAC/DC	12-30 VAC/DC	12-30VAC/DC	12-30VAC/DC
Current consumption (maximum)	<b>500 mA @ 12 VDC</b>	500 mA @ 12 VDC	500 mA @ 12 VDC	500 mA @ 12 VDC	500 mA @ 12 VDC	500 mA @ 12 VDC
Current consumption (nominal)	120 mA @ 12 VDC	120 mA @ 12 VDC	120 mA @ 12 VDC	120 mA @ 12 VDC	120 mA @ 12 VDC	120 mA @ 12 VDC
Casing	Plastic	Plastic	Plastic	Plastic	Plastic	Plastic
Terminal connector design	Connectable	Connectable	Connectable	Connectable	Connectable	Connectable
Dimensions	84x72x32 mm	84x72x32 mm	84x72x32 mm	84x72x32 mm	84x72x32 mm	84x72x32 mm
Weight	200 g	200 g	200 g	200 g	200 g	200 g

### PARAMETERS

Number of selectable inputs/Outputs	4/2 or 6/1	4/2 or 6/1	4/2 or 6/1	4/2 or 6/1
Configurable inputs (NO/NC)	✓	✓	✓	✓
Adjustable input sensitivity	✓	✓	✓	✓
Relay outputs	2 or 1	2 or 1	2 or 1	2 or 1
Output control through free GSM call	✓	-	✓	-
Output control with commands through GSM voice call	✓	-	✓	-
Output control by SMS	✓	-	✓	-
Output activation on GSM fault	✓	-	✓	-
GSM voice call	✓	-	✓	-
SMS sending	✓	-	✓	-
E-mail sending	-	-	✓	✓

# Comparative Chart of PAGER7 MODELS



Please find the General Description of the product on Page 14

## TECHNICAL SPECIFICATION

**Pager7 - 4G.IN4.R2, Pager7 - 4G.IN6.R1  
Pager7 - 3G.IN4.R2, Pager7 - 3G.IN6.R1**

Selectable modem types	3G/4G
Transmission channel	2G/3G/4G/GSM
Operating temperature	-20 °C – +70 °C
Supply voltage	12-30 VDC
Current consumption (maximum)	500 mA @ 12 VDC
Casing	Plastic
Dimensions	84x72x32 mm
Weight	200 g

## PARAMETERS

Number of selectable Inputs/Outputs	4/2 or 6/1
Configurable inputs (NO/NC)	✓
Adjustable input sensitivity	✓
Relay outputs	2 or 1
Output control through free GSM call	✓
Output control with commands through GSM voice call	✓
Output activation on GSM fault	✓
GSM voice call	✓
SMS sending	✓
E-mail sending	✓
Push notification	✓
IP-based reporting to monitoring station	✓
SIA IP DC-09 protocol	✓
TELLMon protocol	✓
Programming method	USB / IP
Programming software	✓
User phone numbers for forwarding incoming SMS messages	8
User phone numbers for reporting	8
User phone numbers for output control	8 / Unlimited
Monitoring station IP addresses	4
Individual reporting to monitoring station	✓
Configurable internal Contact ID event codes	✓
Built-in internal clock	✓
Security password	✓
Event logs / Number of stored events	✓ / 1000
Caller identification	✓
Possibility to connect temperature sensor (easyTEMP)	✓
Mobile application	✓
Individual e-mail sending with predefinable message	✓
Individual SMS sending to user phone numbers with predefinable message	✓
Temperature monitoring and intervention through the outputs (optional)	✓
Periodic test report	✓
Alarm restriction	✓
Alarm control panel function (arming/disarming, entry and exit delay)	✓
Selectable 24h zones	✓
Selectable confirmation request from user phone numbers	✓
NTP server support	✓
IP camera support	✓

## PAGER8



Please find the General Description of the product on Page 14

## PARAMETERS

Contact inputs	<b>6 EOL</b>
Configurable inputs	<b>NO/NC/EOL/ Temperature</b>
Adjustable input sensitivity	✓
Relay outputs	<b>4 LATCH (with NO/ NC outputs)</b>
Output control through free GSM call	✓
Output control with commands through GSM voice call	✓
Output activation on GSM fault	✓
GSM voice call	✓
SMS sending	✓
E-mail sending	✓
Push notification	✓
IP-based reporting to monitoring station	✓
SIA IP DC-09 protocol	✓
TELLMon protocol	✓
Programming method	<b>USB / IP</b>
Programming software	✓
User phone numbers for forwarding incoming SMS messages	<b>4</b>
User phone numbers for reporting	<b>8</b>
User phone numbers for output control	<b>8 / Unlimited</b>
Monitoring station IP addresses	<b>6</b>
Individual reporting to monitoring station	✓
Configurable internal Contact ID event codes	✓
Built-in internal clock	✓
Security password	✓
Event logs / Number of stored events	✓ / <b>1000</b>
Caller identification	✓
Possibility to connect temperature sensor	<b>easyTEMP / 1Wire adapter</b>
Mobile application	✓
Individual e-mail sending with predefinable message	✓
Individual SMS sending to user phone numbers with predefinable message	✓
Temperature monitoring and intervention through the outputs (optional) Temperature monitoring and intervention through the outputs (optional)	✓
Periodic test report	✓
Alarm restriction	✓
Alarm control panel function (arming/disarming, entry and exit delay)	✓
Selectable 24h zones	✓
Selectable confirmation request from user phone numbers	✓
NTP server support	✓
IP camera support	✓
Complex logic (management of AND/OR relations)	✓
Number of registers	<b>8</b>

## TECHNICAL SPECIFICATION

Transmission channel	<b>2G/3G/4G/GSM</b>
Operating temperature	<b>-20 °C – +70 °C</b>
Supply voltage	<b>12-30 VDC</b>
Current consumption (maximum)	<b>500 mA @ 12 VDC</b>
Current consumption (nominal)	<b>120 mA @ 12 VDC</b>
Casing	<b>Plastic</b>
Terminal connector design	<b>Connectable</b>
Dimensions	<b>130x69x19 mm</b>
Weight	<b>200 g</b>

# Comparative Chart of GATE CONTROL MODELS



Please find the General Description of the product on Pages 15-16

## TECHNICAL SPECIFICATION

### Gate Control 20

GSM Gate Control BASE 1000 - 2G,  
GSM Gate Control BASE 1000 - 3G,  
GSM Gate Control BASE 1000 - 4G

GSM Gate Control PRO 20 - 2G,  
GSM Gate Control PRO 20 - 3G,  
GSM Gate Control PRO 20 - 4G,  
GSM Gate Control PRO 1000 - 2G,  
GSM Gate Control PRO 1000 - 3G,  
GSM Gate Control PRO 1000 - 4G

GSM Gate Control PRO 20 - WiFi,  
GSM Gate Control PRO 1000 - WiFi

Transmission channel	GSM	2G/3G/4G/GSM	2G/3G/4G/GSM	WiFi
Selectable modem types	2G	2G/3G/4G	2G/3G/4G	-
Operating temperature	-20 °C – +70 °C	-20 °C – +70 °C	-20 °C – +70 °C	-20 °C – +70 °C
Supply voltage	12-30 VAC/DC	12-30 VAC/DC	12-30 VAC/DC	12-30 VAC/DC
Current consumption (maximum)	400 mA @ 12 VDC	500 mA @ 12 VDC	500 mA @ 12 VDC	500 mA @ 12 VDC
Current consumption (nominal)	40 mA @ 12 VDC	120 mA @ 12 VDC	120 mA @ 12 VDC	120 mA @ 12 VDC
Casing	Plastic	Plastic	Plastic	Plastic
Terminal connector design	Connectable	Connectable	Connectable	Connectable
Dimensions	84x72x32 mm	84x72x32 mm	84x72x32 mm	84x72x32 mm
Weight	200 g	200 g	200 g	200 g

## PARAMETERS

Contact inputs	2	4	4	4
Configurable inputs (NO/NC)	✓	✓	✓	✓
Adjustable input sensitivity	✓	✓	✓	✓
Relay outputs	2	2	2	2
Output control through free GSM call	✓	✓	✓	-
GSM voice call	✓	✓	✓	-
SMS sending	✓	✓	✓	-
E-mail sending	-	-	✓	✓
Push notification	-	-	✓	✓
Programming method	SMS	USB/IP/SMS	USB / IP	USB / IP
Programming software	-	✓	✓	✓
User phone numbers for forwarding incoming SMS messages	1	1	1	-
User phone numbers for reporting	1	4	4	-
Maximum number of users	20	1000	20 or 1000	20 or 1000
Control permissible with hidden caller ID	✓	✓	✓	-
Built-in internal clock	-	✓	✓	✓
Control with caller identification	✓	✓	✓	-
Security password	✓	✓	✓	✓
Event logs / Number of stored events	-	✓ / 1200	✓ / 1200	✓ / 1200
Mobile application	-	-	✓	✓
Individual e-mail sending with predefinable message	-	-	✓	✓
Individual SMS sending to user phone numbers with predefinable message	✓	✓	✓	-
Periodic test report	-	-	✓	✓
IP camera support	-	-	✓	✓



TELLMON



Please find the General Description of the product on Page 17

**RECEPTION OPTIONS**

3G connection	Optional
4G connection	Optional
Signal reception via IP	✓
Forwards received signals through local RS232 port	✓
Receives signals from TELL GPRS communicators with unique (TEX) protocol	✓
Receives signals from TELL SIA IP communicators	✓

**TECHNICAL SPECIFICATION**

Supply voltage	230 VAC / 12 VDC
Dimensions	190x218x64 mm
Weight	1,5kg

**Comparative Chart of  
TMS MODELS**

Please find the General Description of the product on Page 18

**PARAMETERS**

	<b>TMS LIGHT</b>	<b>TMS PRO</b>
Data Manager Module	✓	✓
Database Server Verification Module	–	✓
Administration Module	✓	✓
Administration via network	✓	✓
Modular expansion of administrator reports with export option	✓	✓
Temporary customer restriction	✓	✓
Automatic event repetition restriction	✓	✓
Automatic saving via network	✓	✓
Single PC version	✓	–
Simple report for 1, 3, 7, 31 days back by a single click	✓	✓
Version installable on multiple computers	–	✓
Simple report for selected (multiple) customers	✓	✓
Simple report for any period retrospectively, in a few seconds	✓	✓
Manual event group restriction	✓	✓
Collecting event reports by category	✓	✓
Extended logging of user activity	✓	✓
Possibility to assign GPS coordinates to customers	✓	✓
Manual saving via network	✓	✓
Linux-compatible database server	–	✓
Data Saving Module	✓	✓
Management of operator permissions	✓	✓
Operator Module	✓	✓
Restriction of operator data management	✓	✓
Parameter Manager Module	✓	✓
Templates	✓	✓
Remote Data Visualization Module	–	✓
Map Generator Module	✓	✓
Building a highly reliable system, using multi-database servers	–	✓
Multi-operator mode, even on different company sites	–	✓
Temporary restriction of customer events	✓	✓
Temporary disablement of test monitoring of customers	✓	✓
Creating groups of customers	✓	✓
Receiver management on multiple PCs, even on different company sites	–	✓
Windows compatible database server	✓	✓

## Comparative Chart of EASyAID MODELS



Please find the General Description of the product on Pages 20-21

<b>TECHNICAL SPECIFICATION</b>	<b>easyAID Monitoring</b>	<b>easy AID Mobile</b>	<b>easyAID GSM</b>
Transmission channel	2G/GSM	2G/GSM	GSM
Operating temperature	0 °C – +70 °C	0 °C – +70 °C	0 °C – +70 °C
Supply voltage	12-30V DC	12-30V DC	12-30V DC
Current consumption (maximum)	500 mA @ 12 VDC	500 mA @ 12 VDC	500 mA @ 12 VDC
Current consumption (nominal)	180 mA @ 12 VDC	180 mA @ 12 VDC	180 mA @ 12 VDC
Casing	Plastic	Plastic	Plastic
Dimensions	176x100x30 mm	176x100x30 mm	176x100x30 mm
Weight	300g	300g	300g

<b>PARAMETERS</b>			
IP-based reporting to monitoring station	✓	–	–
GSM voice call	–	–	✓
SMS sending	–	<b>Automatically, as backup</b>	✓
TEX protocol	✓	✓	–
Programming method	<b>USB / IP / GSM data call (CSD)</b>	<b>Mobile application</b>	<b>USB / GSM data call (CSD)</b>
Programming software	✓	–	✓
User phone numbers for forwarding incoming SMS messages	<b>1</b>	–	<b>1</b>
User phone numbers for reporting	–	–	<b>4</b>
Monitoring station IP addresses	<b>6</b>	–	–
Monitoring station phone numbers	<b>2</b>	–	–
Individual reporting to monitoring station	✓	–	–
Configurable internal Contact ID event codes	✓	–	–
Automatic dialing (emergency call)	–	–	✓
Built-in internal clock	✓	✓	✓
Security password	✓	✓	✓
Event logs / Number of stored events	<b>✓ / 1000</b>	<b>✓ / 1000</b>	<b>✓ / 1000</b>
Caller identification	✓	–	✓
Individual SMS sending to user phone numbers with predefinable message	–	–	✓
Periodic test report	✓	–	✓
Number of supported RF emergency transmitters	<b>2</b>	<b>2</b>	<b>2</b>

## Comparative Chart of EASYTRACK MODELS



Please find the General Description of the product on Pages 22-23

### TECHNICAL SPECIFICATION

	easyTrack II BASE 2G easyTrack II BASE 4G	easyTrack II FULL 2G easyTrack II FULL 4G
Selectable modem types	2G/4G	2G/4G
GPS antenna dimensions	50x38x17 mm	50x38x17 mm
Operating temperature	-20 °C – +70 °C	-20 °C – +70 °C
Supply voltage	10-28 VDC	10-28 VDC
Current consumption (standby)	≈20mA@12VDC	≈20mA@12VDC
Current consumption (maximum)	500mA	500mA
Current consumption (nominal)	120mA	120mA
Dimensions	82x125x40 mm	82x125x40 mm
Weight	200 g	200 g

### PARAMETERS

CAN Adapter Connectivity	✓	✓
Diesel Sensor Connectivity	✓	✓
easyFCL Connectivity	✓	✓
easyFMS Connectivity	✓	✓
easyRFID Connectivity	–	✓
easyRPM Monitor II Connectivity	✓	✓
easyTEMP Connectivity	✓	✓
Speaker output	–	✓
OUT1 output	–	✓
OUT2 output	–	✓
Individual alarm functions	✓	✓
POWER OUT output	✓	✓
Sending position and traffic data in SMS message	✓	✓
Position and route visualization and logging	✓	✓
RPM detection from alternator star-point	✓	✓
Evaluation of speed, parking, trip duration, etc.	✓	✓
Forwards car alarm signals to monitoring station, triggered by events	✓	✓
Sending SMS message to user phone number	✓	✓

## CAN ADAPTER



Please find the General Description of the product on Page 23

### PARAMETERS

easyTRACK II BASE Connectivity	✓
easyTRACK II FULL Connectivity	✓

### TECHNICAL SPECIFICATION

Supply voltage	10-28 V DC
Current consumption (nominal)	22mA
Dimensions	40x32x14 mm
Weight	200 g

## DIESEL SENSOR



Please find the General Description of the product on Page 24

### PARAMETERS

easyTRACK II BASE Connectivity	✓
easyTRACK II FULL Connectivity	✓

### TECHNICAL SPECIFICATION

Dimensions (75 cm)	775x36x41mm
Dimensions (100 cm)	1025x36x41mm
Weight	1 kg



## EASYFCL

Please find the General Description of the product on Page 24

### PARAMETERS

easyTRACK II BASE Connectivity	✓
easyTRACK II FULL Connectivity	✓

### TECHNICAL SPECIFICATION

Dimensions (easyFCL 80)	159x127x62 mm (Ø127 mm)
Dimensions (easyFCL100 cm)	184x150x58 mm (Ø150 mm)
Operating temperature	-40°C-+70°C
Weight (easyFCL 80 cm)	1,26 kg
Weight (easyFCL100 cm)	1,48 kg
Supply voltage	10-28 VDC
Current consumption (maximum)	4 mA
Current consumption (nominal)	2,8 mA



## EASYTEMP

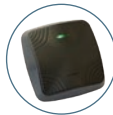
Please find the General Description of the product on Page 25

### PARAMETERS

easyTRACK II BASE Connectivity	✓
easyTRACK II FULL Connectivity	✓

### TECHNICAL SPECIFICATION

Operating temperature	-30°C-+70°C
-----------------------	-------------



## EASRFID

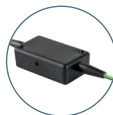
Please find the General Description of the product on Page 25

### PARAMETERS

easyTRACK II FULL Connectivity	✓
--------------------------------	---

### TECHNICAL SPECIFICATION

Dimensions	61x61x20 mm
Weight	60 g



## EASRPM MONITOR II

Please find the General Description of the product on Page 25

### PARAMETERS

easyTRACK II BASE Connectivity	✓
easyTRACK II FULL Connectivity	✓

### TECHNICAL SPECIFICATION

Supply voltage	10-28 VDC
Dimensions	60x35x20 mm
Weight	200 g

## Comparative Chart of POWER SUPPLIES



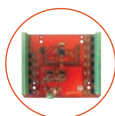
Please find the General Description of the product on Page 26

TECHNICAL SPECIFICATION	TT25VA-12V5	TT40VA-12V5	TT40VAC-16VAC/24VDC
Operating temperature	-10 °C – +50 °C	-10 °C – +50 °C	-10 °C – +50 °C
Input	230 VAC ±10% 50/60 Hz	230 VAC ±10% 50/60 Hz	230 VAC ±10% 50/60 Hz
Output	12,5 VDC	12,5 VDC	16VAC és 24VDC
Maximum load	1,8A	2,66A	2x1,33A
Insulation class	II.	II.	II.
Protection ratio	IP 00	IP 00	IP 00
Safety fuse	T160mA/250V	T315mA/250V	T315mA/250V
Dimensions	88x54x85 mm	95x60x75 mm	95x60x75 mm
Weight	740 g	1000 g	1000 g

### PARAMETERS

Short-circuit protection	✓, Polyfuse	✓, Polyfuse	✓, Polyfuse
Overheating protection	✓	✓	✓
Power supply of alarm systems	–	–	✓
Battery charging	✓	✓	–
Battery charging current restriction	450mA	450mA	–
Protection against battery reverse polarity	✓, Polyfuse and unidirectional suppressor	✓, Polyfuse and P-MOSFET	Polyfuse

## DUALCOM EXT24-D



Please find the General Description of the product on Page 28

### TECHNICAL SPECIFICATION

Operating temperature	-40 °C - +85 °C
Supply voltage	12-30V
Current consumption (standby)	16,5 A
Current consumption (maximum)	110 mA
Dimensions	145x115 mm

## Comparative Chart of FREQUENCY BANDS

### 2G

Band	Sending Frequency	Receiving Frequency
GSM850	869 - 894 MHz	824 - 849 MHz
EGSM900	925 - 960 MHz	880 - 915 MHz
DCS1800	1805 - 1880 MHz	1710 - 1785 MHz
PCS1900	1930 - 1990 MHz	1850 - 1910 MHz

### 3G

Band	Sending Frequency	Receiving Frequency
EGSM900	925 - 960 MHz	880 - 915 MHz
DCS1800	1805 - 1880 MHz	1710 - 1785 MHz
UMTS2100	2110 - 2170 MHz	1920 - 1980 MHz
UMTS1900	1930 - 1990 MHz	1850 - 1910 MHz
UMTS900	925 - 960 MHz	880 - 915 MHz
UMTS850	869 - 894 MHz	824 - 849 MHz

### 4G

Band	Sending Frequency	Receiving Frequency
EGSM900	880 - 915 MHz	925 - 960 MHz
DCS1800	1710 - 1785 MHz	1805 - 1880 MHz
WCDMA B1	1920 - 1980 MHz	2110 - 2170 MHz
WCDMA B2	1850 - 1910 MHz	1930 - 1990 MHz
WCDMA B4	1710 - 1755 MHz	2110 - 2155 MHz
WCDMA B5	824 - 849 MHz	869 - 894 MHz
WCDMA B8	880 - 915 MHz	925 - 960 MHz
LTE-FDD B1	1920 - 1980 MHz	2110 - 2170 MHz
LTE FDD B2	1850 - 1910 MHz	1930 - 1990 MHz
LTE-FDD B3	1710 - 1785 MHz	1805 - 1880 MHz
LTE FDD B4	1710 - 1755 MHz	2110 - 2155 MHz
LTE FDD B5	824 - 849 MHz	869 - 894 MHz
LTE-FDD B7	2500 - 2570 MHz	2620 - 2690 MHz
LTE-FDD B8	880 - 915 MHz	925 - 960 MHz
LTE FDD B12	699 - 716 MHz	729 - 746 MHz
LTE FDD B13	777 - 787 MHz	746 - 756 MHz
LTE-FDD B20	832 - 862 MHz	791 - 821 MHz
LTE-FDD B28A	703 - 733 MHz	758 - 788 MHz

### WIFI

Channel Number	Frequency	Regulatory Organisation
1	2412 MHz	FCC/WORLD/TELEC
2	2417 MHz	FCC/WORLD/TELEC
3	2422 MHz	FCC/WORLD/TELEC
4	2427 MHz	FCC/WORLD/TELEC
5	2432 MHz	FCC/WORLD/TELEC
6	2437 MHz	FCC/WORLD/TELEC
7	2442 MHz	FCC/WORLD/TELEC
8	2447 MHz	FCC/WORLD/TELEC
9	2452 MHz	FCC/WORLD/TELEC
10	2457 MHz	FCC/WORLD/TELEC
11	2462 MHz	FCC/WORLD/TELEC
12	2467 MHz	WORLD/TELEC
13	2472 MHz	WORLD/TELEC
14	2484 MHz	TELEC

**TELL**

# REMOTE MONITORING SYSTEM SUPERVISION

You take care of the safety  
of your customers, but

**Who takes care of the safety  
of your system?**



Integrated remote monitoring solutions from A to Z.

**Novelty!** System supervision services right from the manufacturer!

Tracking and logging server parameters, error detection and failure diagnosis.

**Contact us if you want to make sure that your  
remote monitoring system is safe!**



<https://tell.hu/en>